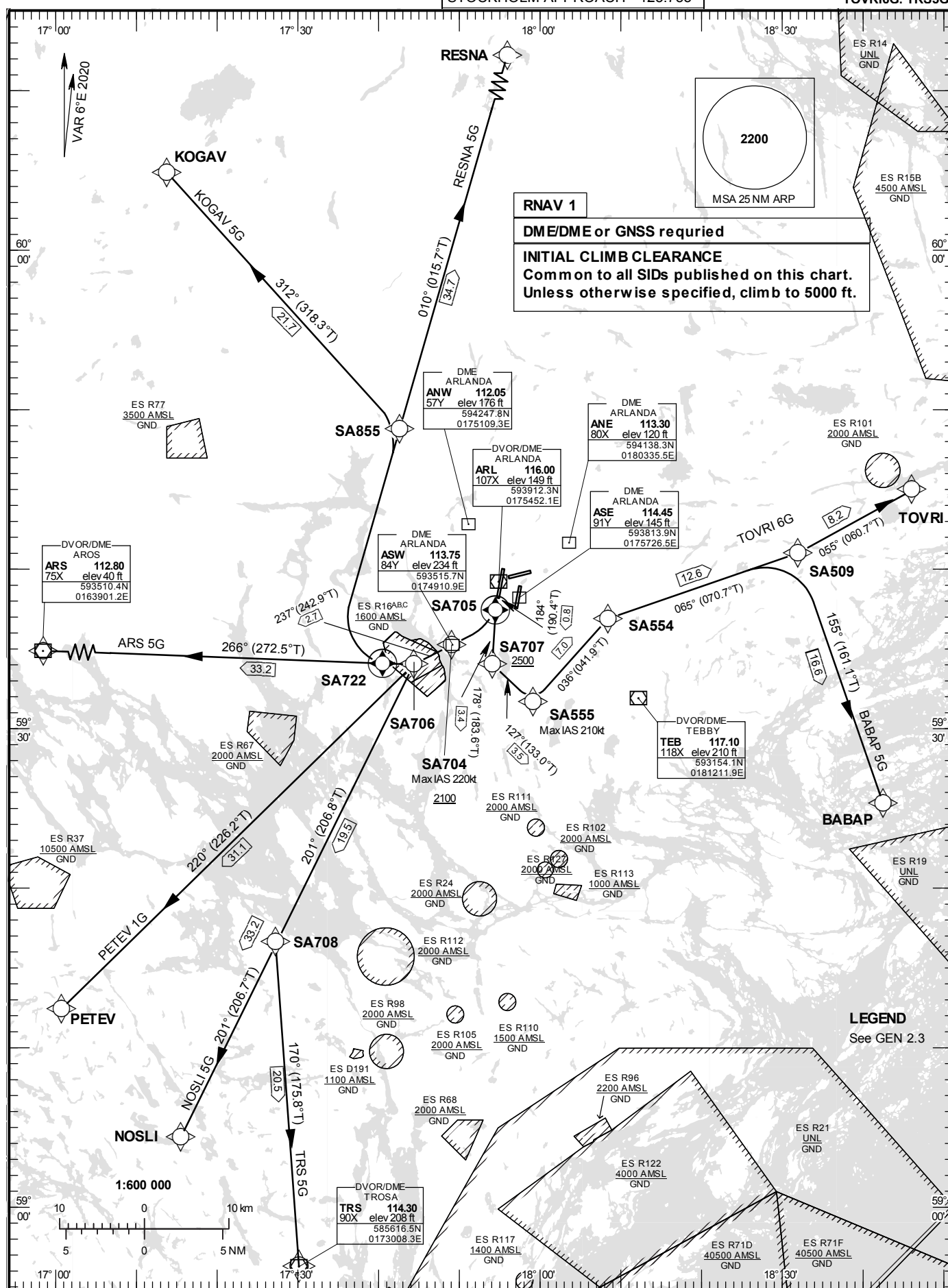


**RNAV RWY 19R**

ARS5G, BABAP5G, KOGAV5G,  
NOSLI5G, PETEV1G, RESNA5G,  
TOVRI6G, TRS5G

HGT and ALT in ft  
BRG are MAG (True)  
**TA 5000 ft AMSL**

ARLANDA TOWER	118.505
ARLANDA ATIS DEP	121.630
STOCKHOLM APPROACH	123.755



LFV

STOCKHOLM/Arlanda

Prescribed Coding of RNAV SID for RWY 19R

Notes:

INITIAL CLIMB CLEARANCE: Climb to 5000 ft unless otherwise specified. Common to all SIDs published on charts.

Aircraft proceeding on RNAV SID shall use 400 ft/NM (6.6%) as a minimum gradient of climb up to 5000 ft AMSL.  
Aircraft unable to conform with this procedure shall inform ATC accordingly.

Aircraft from STOCKHOLM/Arlanda shall not be operated at an airspeed of more than 250 kt IAS below FL 100 unless otherwise instructed.

Contact Frequency: Contact STOCKHOLM DEPARTURE, when so instructed by TWR, on channel indicated below.

ARS 5G

Path Term	Waypoint Identifier	Fly-over	Course °M(°T)	Dist (NM)	Turn Dir	Rest Alts (ft AMSL)	Speed Limits (kt)	VPA/ RDH (°/ft)	Rec Navaid	Navigation Specification
CF	SA705	Y	184°(190.4°)	0.8	-	-	-	-	ARL	RNAV 1
DF	SA704	-	-	-	R	+2100	-220	-	-	RNAV 1
TF	SA706	-	237° (242.9°)	2.7	-	-	-	-	-	RNAV 1
TF	ARS	-	266° (272.5°)	33.2	-	-	-	-	-	RNAV 1

SID instruction:

Climb on track 184° to SA705 – SA704 (MNM 2100 ft, max IAS 220 kt) – SA706 – ARS  
(MNM climb gradient 7.6% (460 ft/NM) until SA704)

124.105 MHz

ACFT unable to follow RNAV SID:

Report "unable RNAV SID due RNAV type" to Clearance Delivery and "unable RNAV SID" to Stockholm Departure at first contact.  
Climb on track 184° to ARL DME 2. Turn right to track 239° (max IAS 220 kt in turn) and continue climb to MNM 2100 ft at ARL DME 5.0 Expect radar vectors to ARS.  
(MNM climb gradient 7.6% (460 ft/NM) until ARL DME 5.0)

BABAP 5G

Path Term	Waypoint Identifier	Fly-over	Course °M(°T)	Dist (NM)	Turn Dir	Rest Alts (ft AMSL)	Speed Limits (kt)	VPA/ RDH (°/ft)	Rec Navaid	Navigation Specification
CF	SA705	Y	184°(190.4°)	0.8	-	-	-	-	ARL	RNAV 1
TF	SA707	-	178°(183.6°)	3.4	-	+2500	-	-	-	RNAV 1
TF	SA555	-	127°(133.0°)	3.5	-	-	-210	-	-	RNAV1
TF	SA554	-	036°(041.9°)	7.0	L	-	-	-	-	RNAV 1
TF	SA509	-	065°(070.7°)	12.6	-	-	-	-	-	RNAV 1
TF	BABAP	-	155°(161.1°)	16.6	R	-	-	-	-	RNAV 1

SID instruction:

Climb to SA705 on course 184°. Turn left on course 178° to SA707. Turn left to SA555 (max IAS 210 kt) – SA554 – SA509 – BABAP.

130.330 MHz

MNM climb gradient 13.3% (810 ft/NM) until SA707, due to separation criteria.

Note:

If unable 2500 ft before turn at SA707, continue on track 178° and inform ATC.

MNM climb gradient 4.8% (295 ft/NM) until SA707, due to obstacles.

ACFT unable to follow RNAV SID:

Report "unable RNAV SID due RNAV type" to Clearance Delivery and "unable RNAV SID" to Stockholm Departure at first contact. Climb on track 184° to ARL DME 2. Turn left to track 178° to ARL DME 5.2. At or above 2500 ft turn left to track 127°(max IAS 210 kt). Expect radar vectors to BABAP.

**STOCKHOLM/Arlanda****KOGAV 5G**

Path Term	Waypoint Identifier	Fly-over	Course °M(°T)	Dist (NM)	Turn Dir	Rest Alts (ft AMSL)	Speed Limits (kt)	VPA/ RDH (°/ft)	Rec Navaid	Navigation Specification
CF	SA705	Y	184°(190.4°)	0.8	-	-	-	-	ARL	RNAV 1
DF	SA704	-	-	-	R	+2100	-220	-	-	RNAV 1
TF	SA706	-	237°(242.9°)	2.7	-	-	-	-	-	RNAV 1
CF	SA722	Y	266°(271.7°)	2.0	-	-	-	-	ARL	RNAV 1
DF	SA855	-	-	-	R	-	-	-	-	RNAV 1
TF	KOGAV	-	312°(318.3°)	21.7	L	-	-	-	-	RNAV 1

SID instruction: Climb on track 184° to SA705 – SA704 (MNM 2100 ft, max IAS 220 kt) – SA706 – SA722 – SA855– KOGAV (MNM climb gradient 7.6% (460 ft/NM) until SA704) **124.105 MHz**

ACFT unable to follow RNAV SID: Report "unable RNAV SID due RNAV type" to Clearance Delivery and "unable RNAV SID" to Stockholm Departure at first contact.  
Climb on track 184° to ARL DME 2. Turn right to track 239° (max IAS 220 kt in turn) and continue climb to MNM 2100 ft at ARL DME 5.0. Expect radar vectors to KOGAV.  
(MNM climb gradient 7.6% (460 ft/NM) until ARL DME 5.0)

**NOSLI 5G**

Path Term	Waypoint Identifier	Fly-over	Course °M(°T)	Dist (NM)	Turn Dir	Rest Alts (ft AMSL)	Speed Limits (kt)	VPA/ RDH (°/ft)	Rec Navaid	Navigation Specification
CF	SA705	Y	184°(190.4°)	0.8	-	-	-	-	ARL	RNAV 1
DF	SA704	-	-	-	R	+2100	-220	-	-	RNAV 1
TF	SA706	-	237°(242.9°)	2.7	-	-	-	-	-	RNAV 1
TF	NOSLI	-	201°(206.7°)	33.2	-	-	-	-	-	RNAV 1

SID instruction: Climb on track 184° to SA705 – SA704 (MNM 2100 ft, max IAS 220 kt) – SA706 – NOSLI (MNM climb gradient 7.6% (460 ft/NM) until SA704) **124.105 MHz**

ACFT unable to follow RNAV SID: Report "unable RNAV SID due RNAV type" to Clearance Delivery and "unable RNAV SID" to Stockholm Departure at first contact.  
Climb on track 184° to ARL DME 2. Turn right to track 239° (max IAS 220 kt in turn) and continue climb to MNM 2100 ft at ARL DME 5.0. Expect radar vectors to NOSLI.  
(MNM climb gradient 7.6% (460 ft/NM) until ARL DME 5.0)

**PETEV 1G**

Path Term	Waypoint Identifier	Fly-over	Course °M(°T)	Dist (NM)	Turn Dir	Rest Alts (ft AMSL)	Speed Limits (kt)	VPA/ RDH (°/ft)	Rec Navaid	Navigation Specification
CF	SA705	Y	184°(190.4°)	0.8	-	-	-	-	ARL	RNAV 1
DF	SA704	-	-	-	R	+2100	-220	-	-	RNAV 1
TF	SA706	-	237°(242.9°)	2.7	-	-	-	-	-	RNAV 1
TF	PETEV	-	220°(226.2°)	31.1	-	-	-	-	-	RNAV 1

SID instruction: Climb on track 184° to SA705 – SA704 (MNM 2100 ft, max IAS 220 kt) – SA706 – PETEV (MNM climb gradient 7.6% (460 ft/NM) until SA704) **124.105 MHz**

ACFT unable to follow RNAV SID: Report "unable RNAV SID due RNAV type" to Clearance Delivery and "unable RNAV SID" to Stockholm Departure at first contact.  
Climb on track 184° to ARL DME 2. Turn right to track 239° (max IAS 220 kt in turn) and continue climb to MNM 2100 ft at ARL DME 5.0. Expect radar vectors to PETEV.(MNM climb gradient 7.6% (460 ft/NM) until ARL DME 5.0)

**STOCKHOLM/Arlanda****RESNA 5G**

Path Term	Waypoint Identifier	Fly-over	Course °M(°T)	Dist (NM)	Turn Dir	Rest Alts (ft AMSL)	Speed Limits (kt)	VPA/ RDH (°/ft)	Rec Navaid	Navigation Specification
CF	SA705	Y	184°(190.4°)	0.8	-	-	-	-	ARL	RNAV 1
DF	SA704	-	-	-	R	+2100	-220	-	-	RNAV 1
TF	SA706	-	237°(242.9°)	2.7	-	-	-	-	-	RNAV 1
CF	SA722	Y	266°(271.7°)	2.0	-	-	-	-	ARL	RNAV 1
DF	SA855	-	-	-	R	-	-	-	-	RNAV 1
TF	RESNA	-	010°(015.7°)	34.7	-	-	-	-	-	RNAV 1

SID instruction: Climb on track 184° to SA705 – SA704 (MNM 2100 ft, max IAS 220 kt) – SA706 – SA722 – SA855 – RESNA (MNM climb gradient 7.6% (460 ft/NM) until SA704) **124.105 MHz**

ACFT unable to follow RNAV SID: Report "unable RNAV SID due RNAV type" to Clearance Delivery and "unable RNAV SID" to Stockholm Departure at first contact.  
Climb on track 184° to ARL DME 2. Turn right to track 239° (max IAS 220 kt in turn) and continue climb to MNM 2100 ft at ARL DME 5.0. Expect radar vectors to RESNA. (MNM climb gradient 7.6% (460 ft/NM) until ARL DME 5.0)

**TOVRI 6G**

Path Term	Waypoint Identifier	Fly-over	Course °M(°T)	Dist (NM)	Turn Dir	Rest Alts (ft AMSL)	Speed Limits (kt)	VPA/ RDH (°/ft)	Rec Navaid	Navigation Specification
CF	SA705	Y	184°(190.4°)	0.8	-	-	-	-	ARL	RNAV 1
TF	SA707	-	178°(183.6°)	3.4	-	+2500	-	-	-	RNAV 1
TF	SA555	-	127°(133.0°)	3.5	-	-	-210	-	-	RNAV1
TF	SA554	-	036°(041.9°)	7.0	L	-	-	-	-	RNAV 1
TF	SA509	-	065°(070.7°)	12.6	-	-	-	-	-	RNAV1
TF	TOVRI	-	055°(060.7°)	8.2	-	-	-	-	-	RNAV 1

SID instruction: Climb to SA705 on course 184°. Turn left on course 178° to SA707. Turn left to SA555 (max IAS 210 kt) – SA554 – SA509 – TOVRI. **130.330 MHz**

MNM climb gradient 13.3% (810 ft/NM) until SA707, due to separation criteria.

Note: If unable 2500 ft before turn at SA707, continue on track 178° and inform ATC.

MNM climb gradient 4.8% (295 ft/NM) until SA707, due to obstacles.

ACFT unable to follow RNAV SID: Report "unable RNAV SID due RNAV type" to Clearance Delivery and "unable RNAV SID" to Stockholm Departure at first contact. Climb on track 184° to ARL DME 2. Turn left to track 178° to ARL DME 5.2. At or above 2500 ft turn left to track 127°(max IAS 210 kt). Expect radar vectors to TOVRI.

**TRS 5G**

Path Term	Waypoint Identifier	Fly-over	Course °M(°T)	Dist (NM)	Turn Dir	Rest Alts (ft AMSL)	Speed Limits (kt)	VPA/ RDH (°/ft)	Rec Navaid	Navigation Specification
CF	SA705	Y	184°(190.4°)	0.8	-	-	-	-	ARL	RNAV 1
DF	SA704	-	-	-	R	+2100	-220	-	-	RNAV 1
TF	SA706	-	237°(242.9°)	2.7	-	-	-	-	-	RNAV 1
TF	SA708	-	201°(206.8°)	19.5	-	-	-	-	-	RNAV 1
TF	TRS	-	170°(175.8°)	20.5	-	-	-	-	-	RNAV 1

SID instruction: Climb on track 184° to SA705 – SA704 (MNM 2100 ft, max IAS 220 kt) – SA706 – SA708 – TRS (MNM climb gradient 7.6% (460 ft/NM) until SA704) **124.105 MHz**

ACFT unable to follow RNAV SID: Report "unable RNAV SID due RNAV type" to Clearance Delivery and "unable RNAV SID" to Stockholm Departure at first contact.  
Climb on track 184° to ARL DME 2. Turn right to track 239° (max IAS 220 kt in turn) and continue climb to MNM 2100 ft at ARL DME 5.0. Expect radar vectors to TRS. (MNM climb gradient 7.6% (460 ft/NM) until ARL DME 5.0)